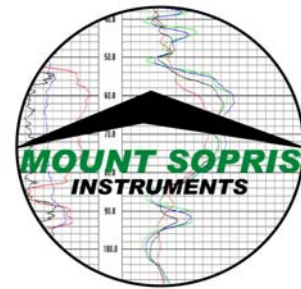




**NEW PRODUCT**



## The *MATRIX* Logger

### DSP direct link logger

As in the telecommunication technology, the well logging tool industry has seen the multiplication of telemetry standards with constantly evolving specifications and performance.

From the surface acquisition system point of view, the present solution has resulted in the multiplication of hardware modules in surface systems leading to increasing complexity and prices. The consequence has been a constant need for new upgrades and a limited compatibility between systems from different manufacturers.

**ALT and MSI are proud to introduce the *MATRIX* “DSP direct link” logger.** This revolutionary system consists of a Digital Signal Processor directly linked with the wireline through a pair of fast high resolution A/D and D/A converters.

Telemetry details are handled by software, providing unparalleled flexibility and upgrade possibilities. The system automatically identifies logging tool telemetry protocol without operator intervention.

#### Specifications :

- ◆ **Packaging:** Size: 3” (7.6 cm) x 13” (33 cm) x 8.5” (22 cm) Weight: 3 Kg.  
(also available as standard 19” rack mount unit)
- ◆ **Utilize the latest Digital Signal Processing (DSP) technology** to minimize hardware complexity and maximize flexibility with a 1Mb/s 16-bit DSP! The interface incorporates expansion slots for future developments and upgrades.
- ◆ **Wireline and winch flexibility** (runs on coax, mono, 4 or 7 conductor wireline)
- ◆ **Compatible with most shaft encoders.**
- ◆ **Supports most downhole tools.** Ask for the last updated list of tools supported.
- ◆ **Use any notebook PC with fast USB-2 port. Log high resolution data 2X faster.**
- ◆ **Software controlled**, multi-tasking system. Accommodate all the tasks necessary for maximum data security and ease of operation. Real-time logging conducted at the same time as other tasks, such as data transmission, plotting, log editing and processing.
- ◆ **Graphical user interface.** The system is easy to use and conforms to the MS Windows standard. Data monitoring is available in windows that may be resized and repositioned by the user. (On screen scrolling log display, real-time printing and numeric data monitors are standard.)
- ◆ **Software features include:** Calibrations, Filtering, System setup control, Depth system selection, data units selection, Real time data monitors, real time processing, Las Writer, Improved Real time and replay printing on windows compatible printer, New replay control bar, New browser management tool with improved user friendly browser panel, New Rd file “inspector”, High-speed log database, New Tool file editor, database .tol file management, with tool string capabilities and graphical image of tools.